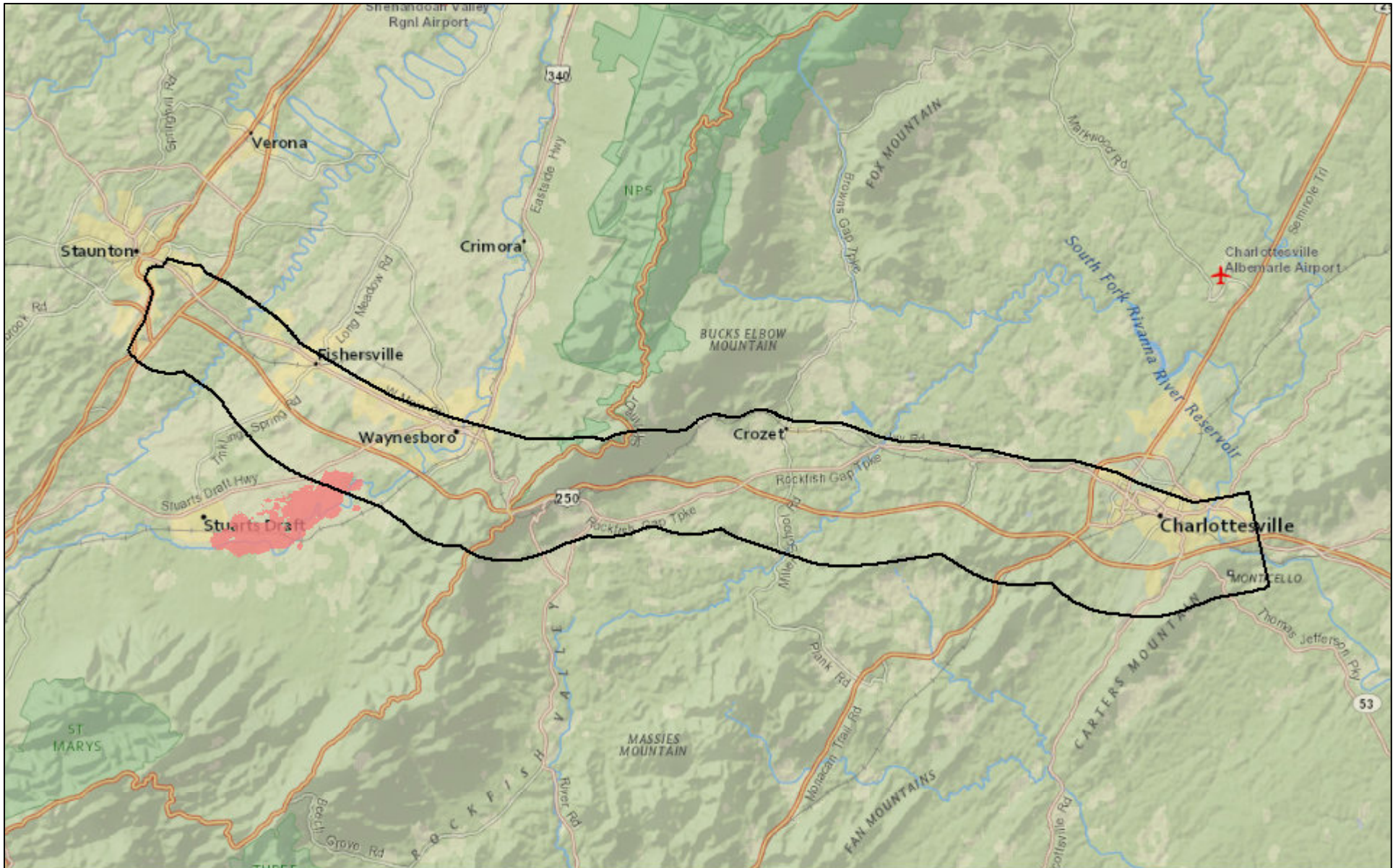


## **A**ppendix C: Environmental review maps

---

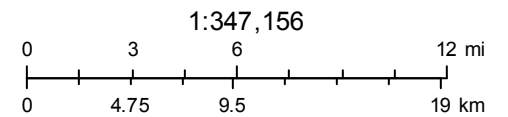
---

# Eastern Prairie Fringed Orchid



October 26, 2017

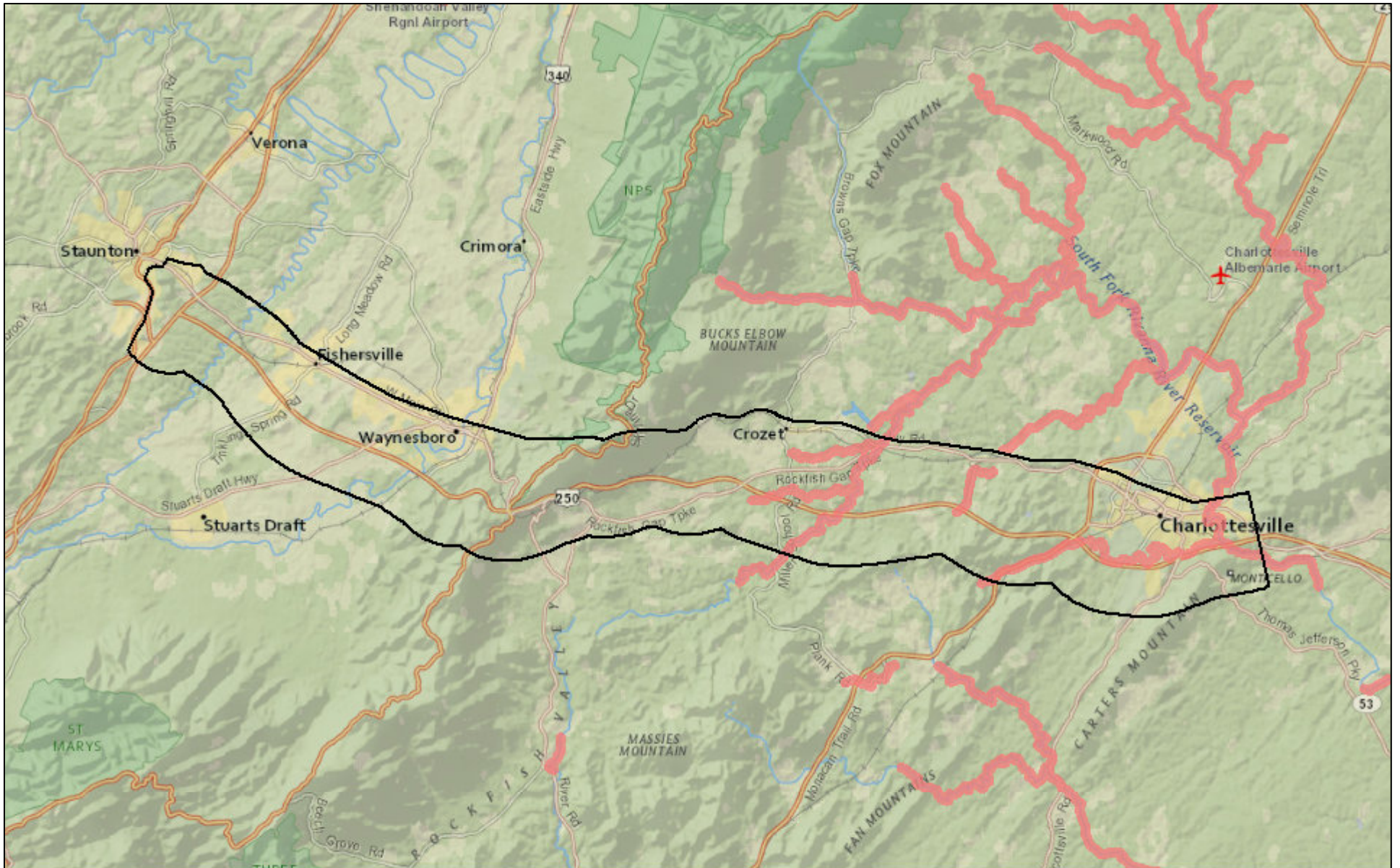
■ Predicted Suitable Habitat



Content may not reflect National Geographic's current map policy. Sources: National Geographic, Esri, DeLorme, HERE, UNEP-WCMC, USGS, NASA,

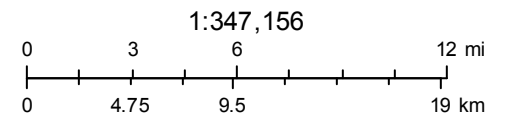


# James Spiny mussel



October 26, 2017

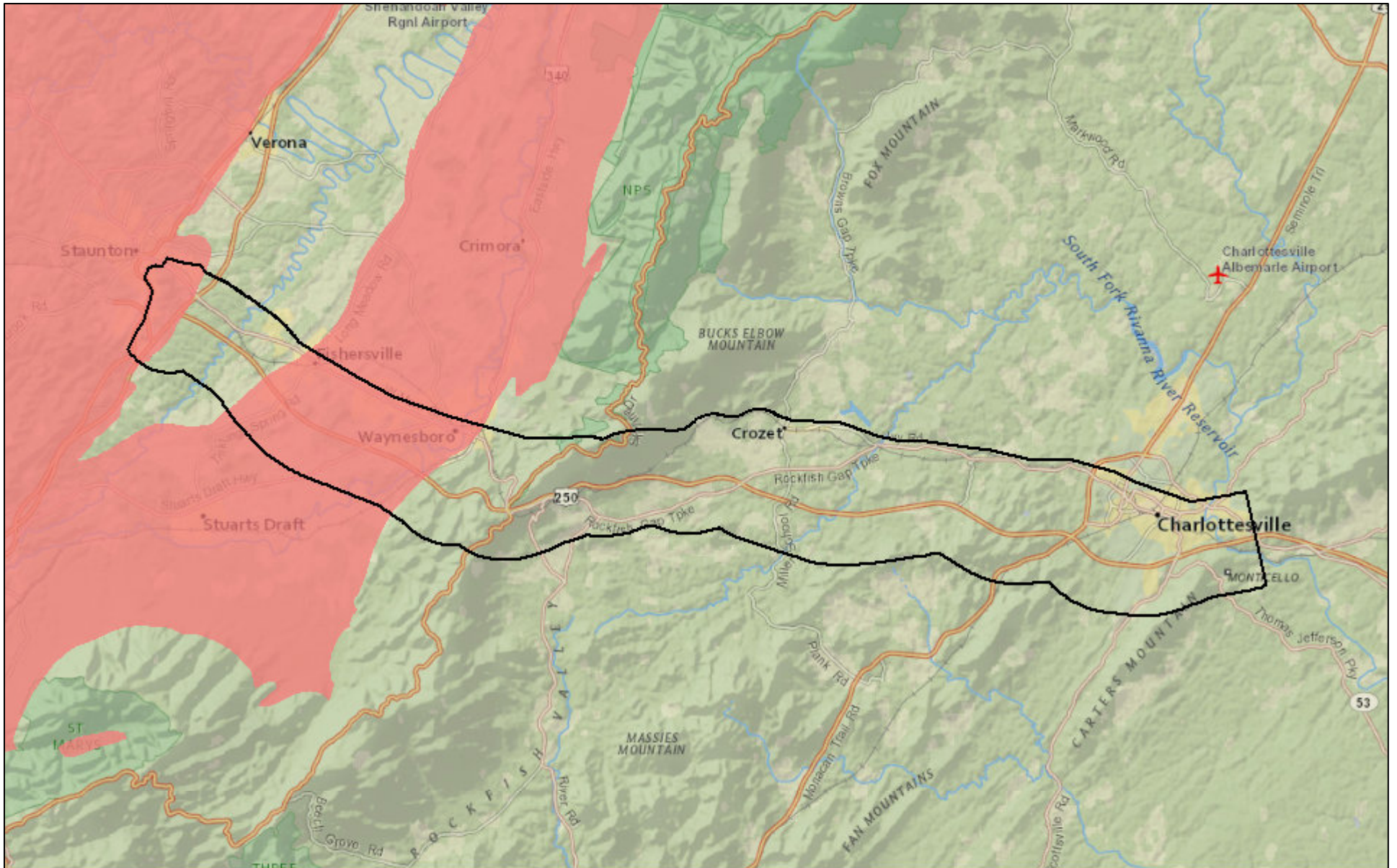
■ Predicted Suitable Habitat



Content may not reflect National Geographic's current map policy. Sources: National Geographic, Esri, DeLorme, HERE, UNEP-WCMC, USGS, NASA,

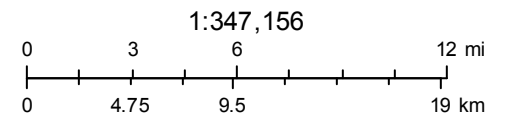


# Karst Bedrock



October 26, 2017

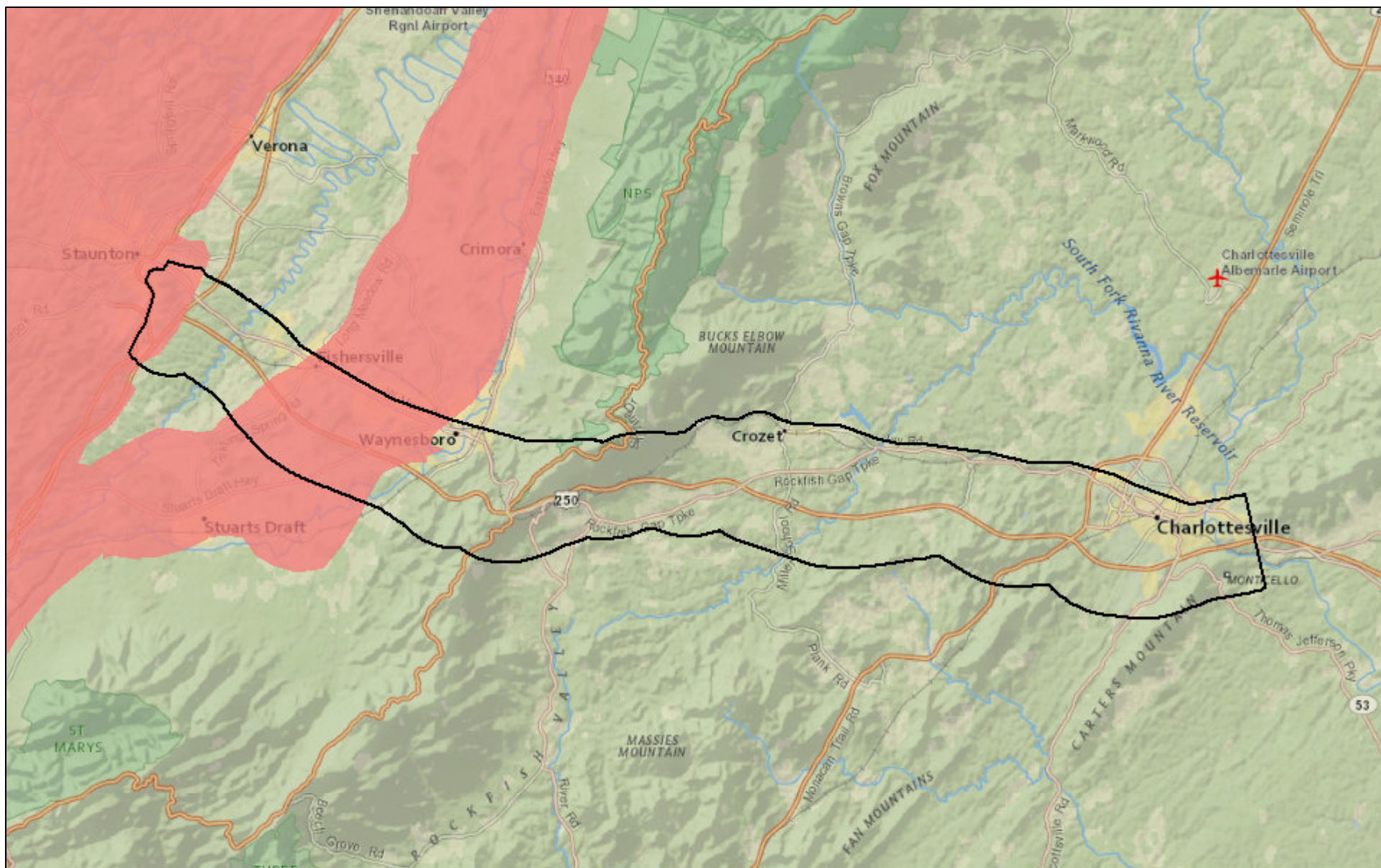
■ Karst Topography Present



Content may not reflect National Geographic's current map policy. Sources: National Geographic, Esri, DeLorme, HERE, UNEP-WCMC, USGS, NASA,

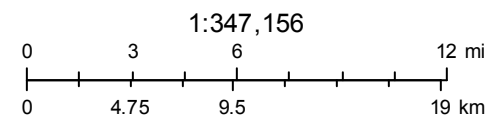


# Madison Cave Isopod



October 26, 2017

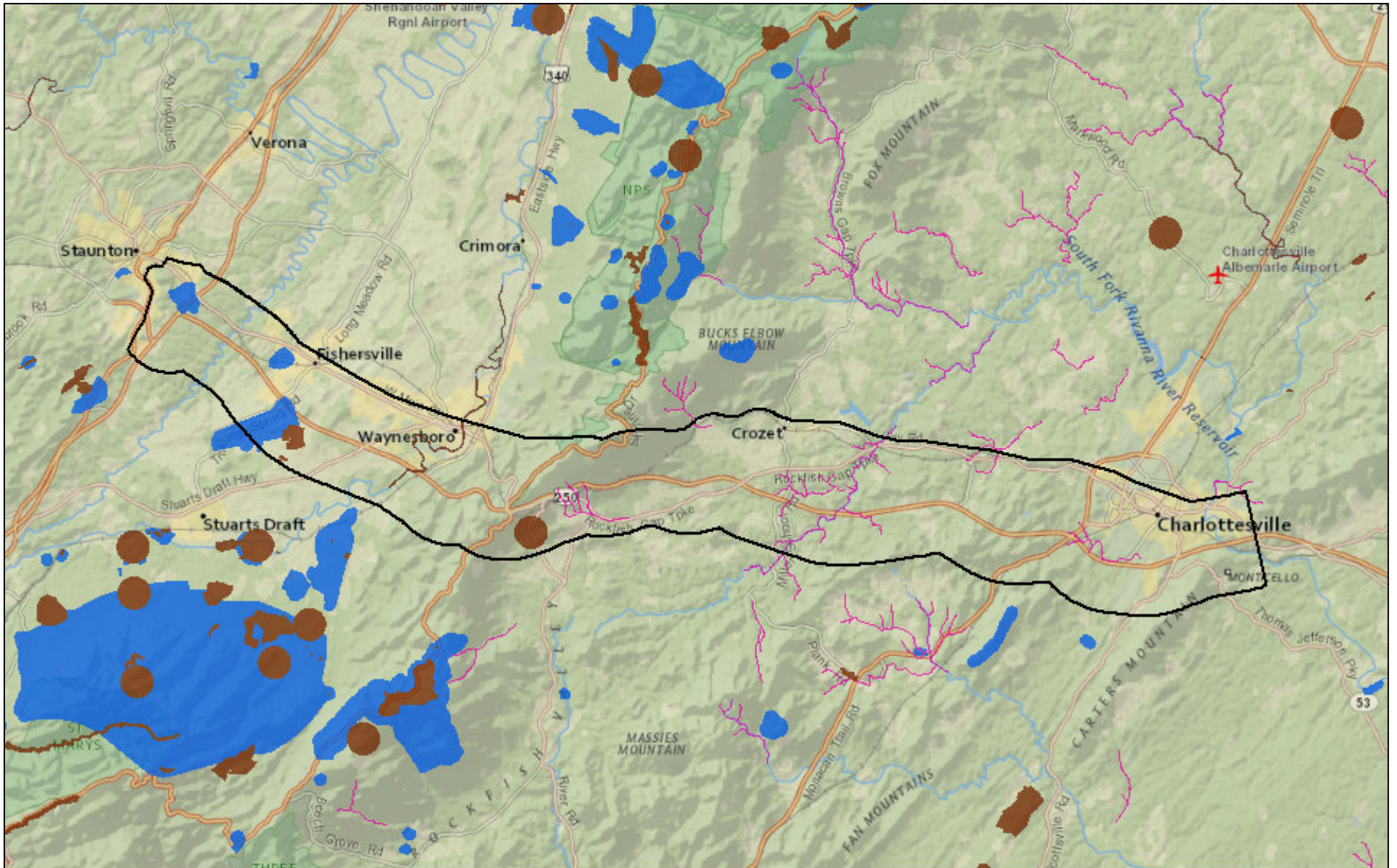
■ Predicted Suitable Habitat



Content may not reflect National Geographic's current map policy. Sources: National Geographic, Esri, DeLorme, HERE, UNEP-WCMC, USGS, NASA,

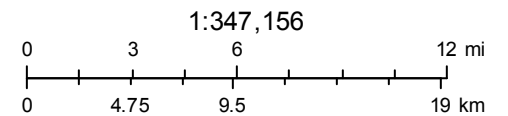


# NH Screening Layer



October 26, 2017

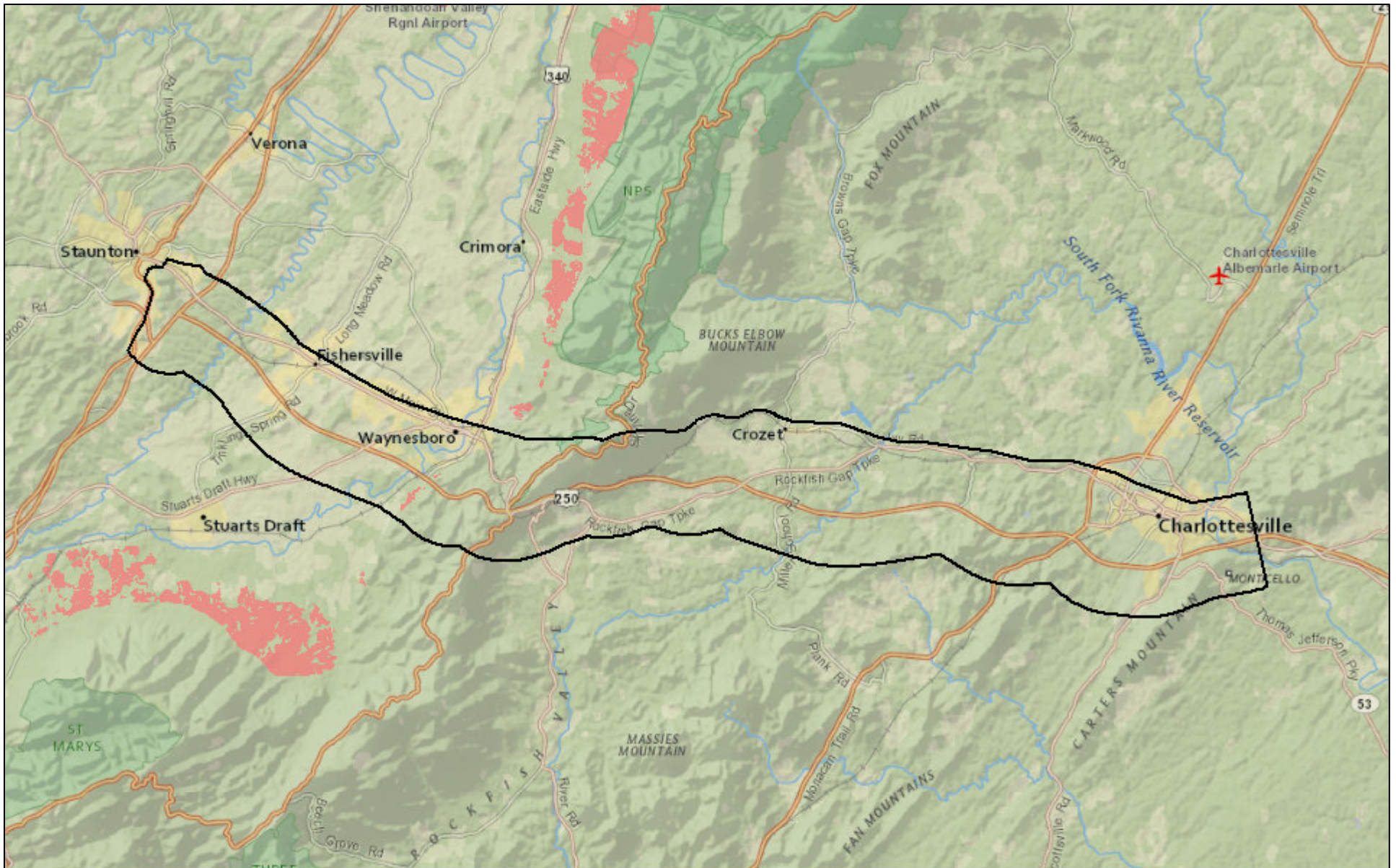
- Conservation Site
- GLNHR
- SCU



Content may not reflect National Geographic's current map policy. Sources: National Geographic, Esri, DeLorme, HERE, UNEP-WCMC, USGS, NASA,

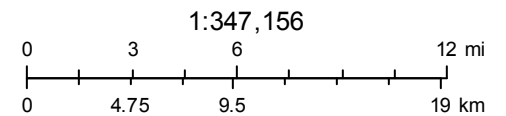


# Northeastern Bulrush



October 26, 2017

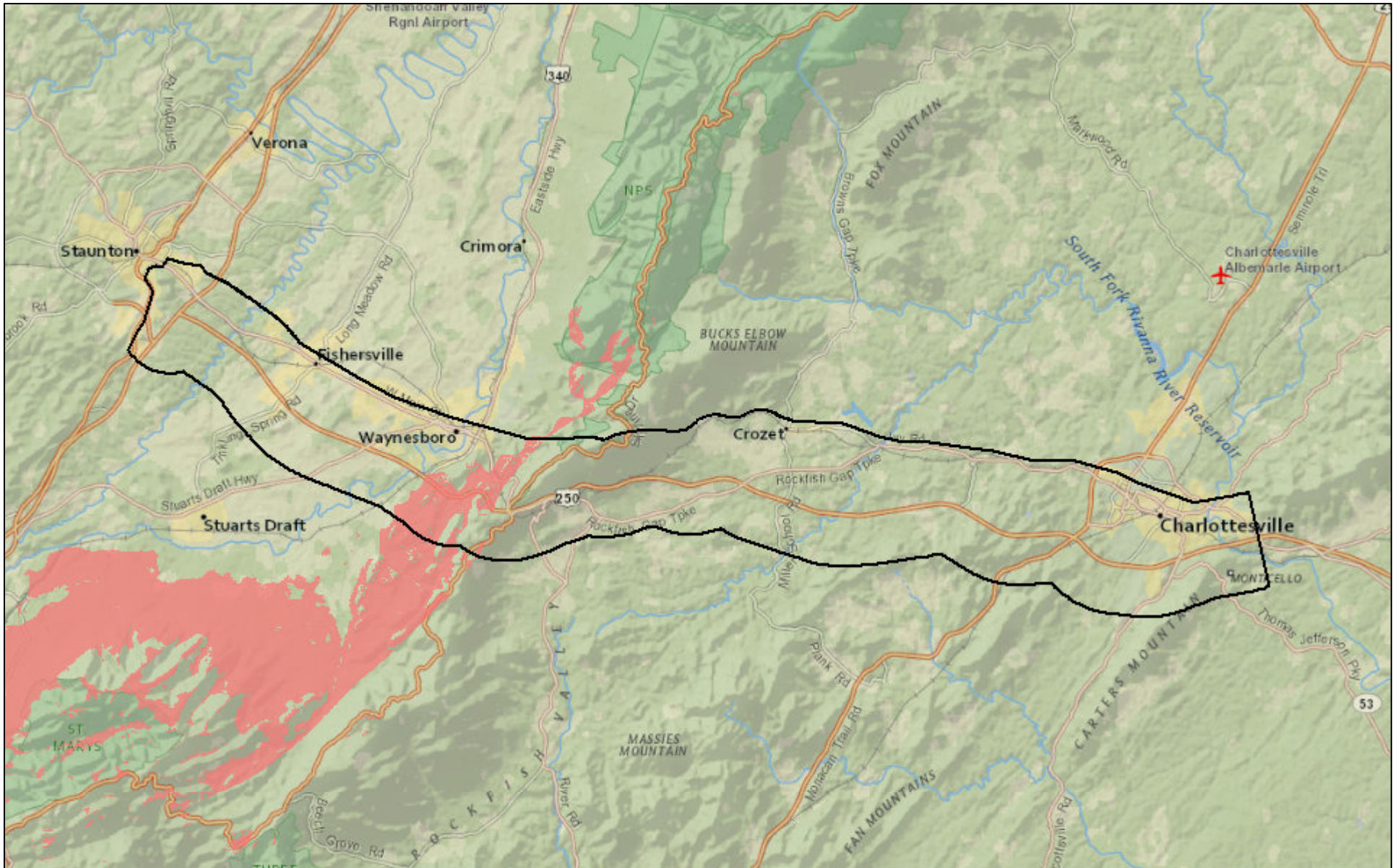
■ Predicted Suitable Habitat



Content may not reflect National Geographic's current map policy. Sources: National Geographic, Esri, DeLorme, HERE, UNEP-WCMC, USGS, NASA,

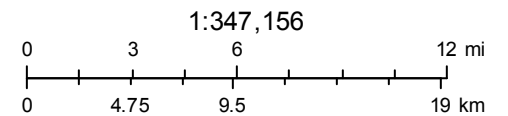


# Swamp Pink



October 26, 2017

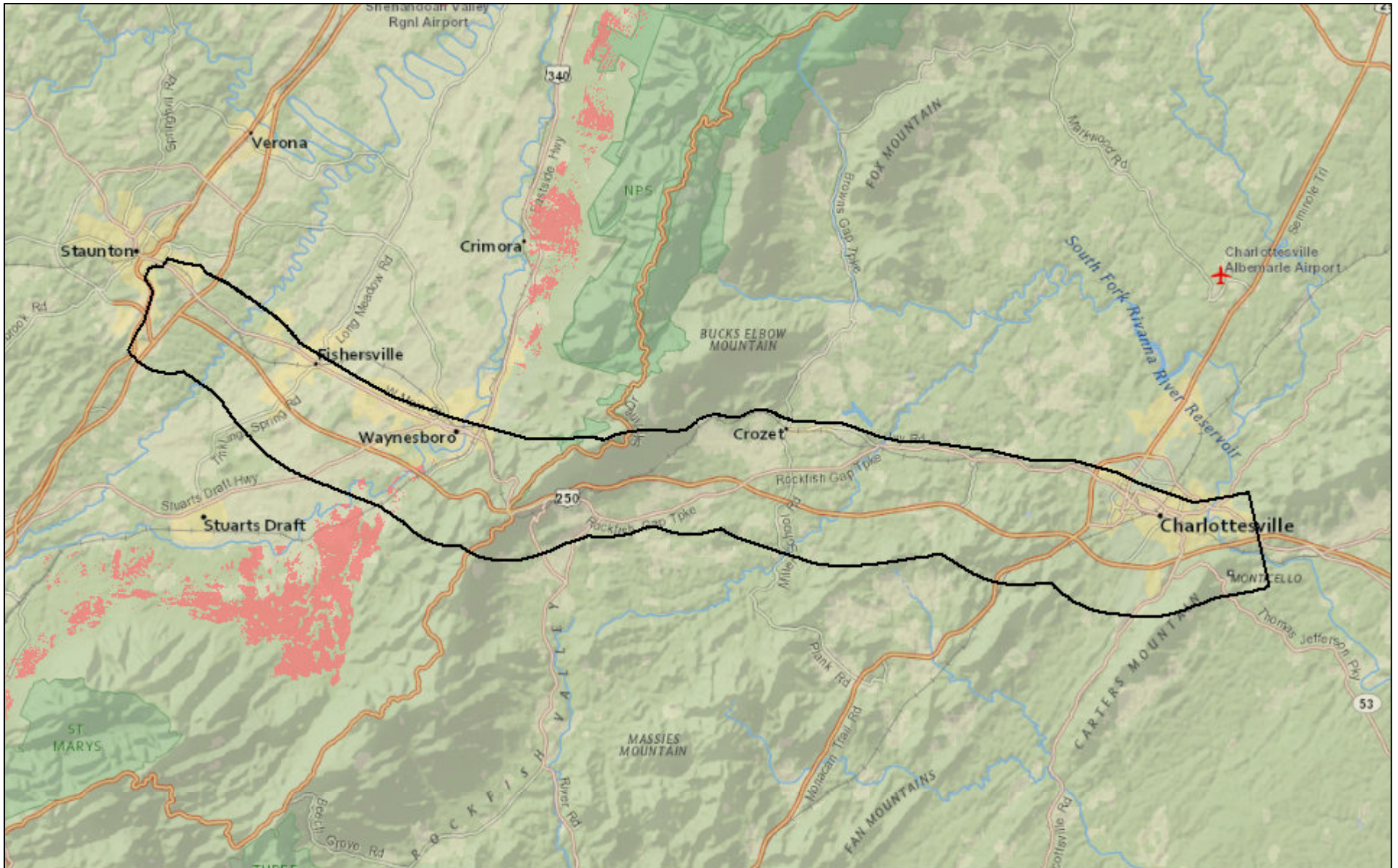
■ Predicted Suitable Habitat



Content may not reflect National Geographic's current map policy. Sources: National Geographic, Esri, DeLorme, HERE, UNEP-WCMC, USGS, NASA,

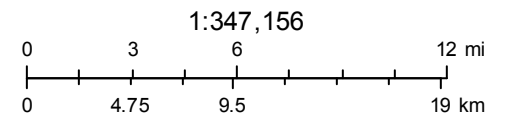


# Virginia Sneezeweed



October 26, 2017

■ Predicted Suitable Habitat



Content may not reflect National Geographic's current map policy. Sources: National Geographic, Esri, DeLorme, HERE, UNEP-WCMC, USGS, NASA,