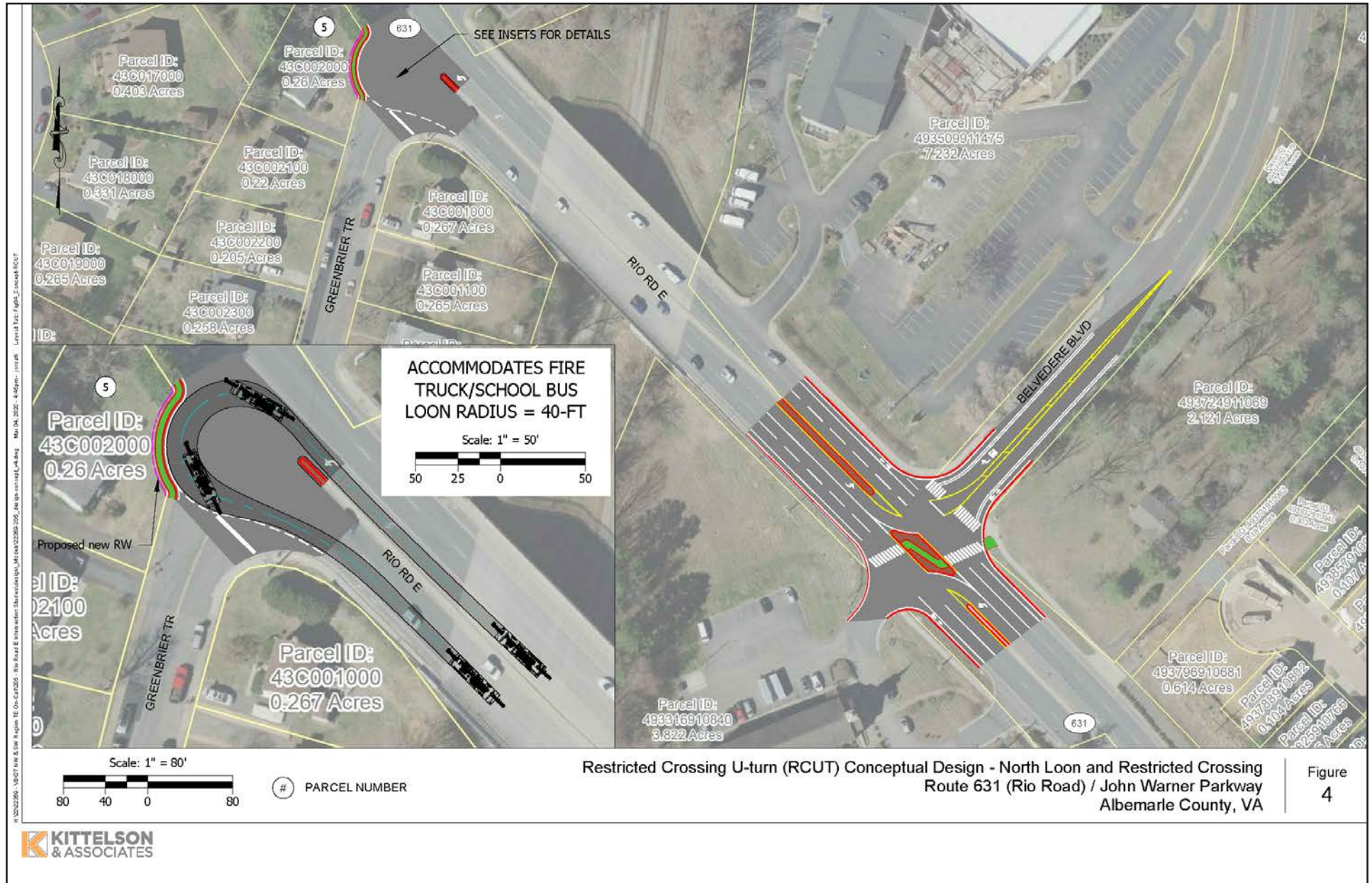


Belvedere and Rio Road Intersection Improvements



Belvedere and Rio Road Intersection Improvements

Project Description

This project will convert the existing un-signalized intersection to a Restricted Crossing U-Turn (R-CUT). This will reduce the number of conflict points and crashes at the intersection and will improve access and mobility along the corridor with improvements to pedestrian features.

Cost Estimate

Preliminary Engineering	\$1.0 million
Right of Way Acquisition	\$1.0 million
Construction	\$5.0 million

Needs Addressed



Safety



Pedestrian Access

Project Concerns

No known concerns at this time

Entity Submitting

Albemarle County