



SHRP2 I-64 Corridor Plan: Shenandoah Piedmont Area Collaborative Effort (SPaCE)

An inter-regional corridor planning study that partners the Charlottesville/Albemarle MPO and the Staunton-Augusta-Waynesboro MPO. The study will evaluate the I-64 corridor between Charlottesville and Staunton.



**Staunton Augusta
Waynesboro**
Metropolitan Planning
Organization

Background

The Federal Highway Administration (FHWA) has awarded the Thomas Jefferson Planning District Commission (TJPDC) a **SHRP2 User Incentive Grant** to develop a Corridor Study for Interstate 64. The study area spans the I-64 Corridor from Pantops, east of Charlottesville to the City of Staunton. The study area crosses multiple jurisdictional boundaries and interests, including two PDCs two MPOs, five localities and three VDOT Districts. TJPDC will contract with the Central Shenandoah Planning District Commission (CSPDC) to perform activities in the SAWMPO region.

Study Intent

Using FHWA’s PlanWorks, a working group will be formed with the **goals of identifying corridor deficiencies, developing solutions, and building cross-boundary and cross-disciplinary partnerships**. The development of these partnerships is essential to furthering cooperation between local, regional, state and federal agencies; alleviating jurisdictional barriers; and identifying common needs. It is anticipated that the study will be completed by September 2017.

Study Activities

- Developing a working group
- Stakeholder outreach
- Joint Stakeholder/MPO meetings
- Data collection
- Needs assessment
- Drafting MOUs
- Draft performance measures
- GIS/Map development
- Draft Corridor Study
- Case Study



Working Group

Representatives of:

TJPDC	Staunton
CSPDC	Albemarle County
CAMPO	Augusta County
SAWMPO	CAT
Charlottesville	BRITE
Waynesboro	VDOT








For additional information please contact:

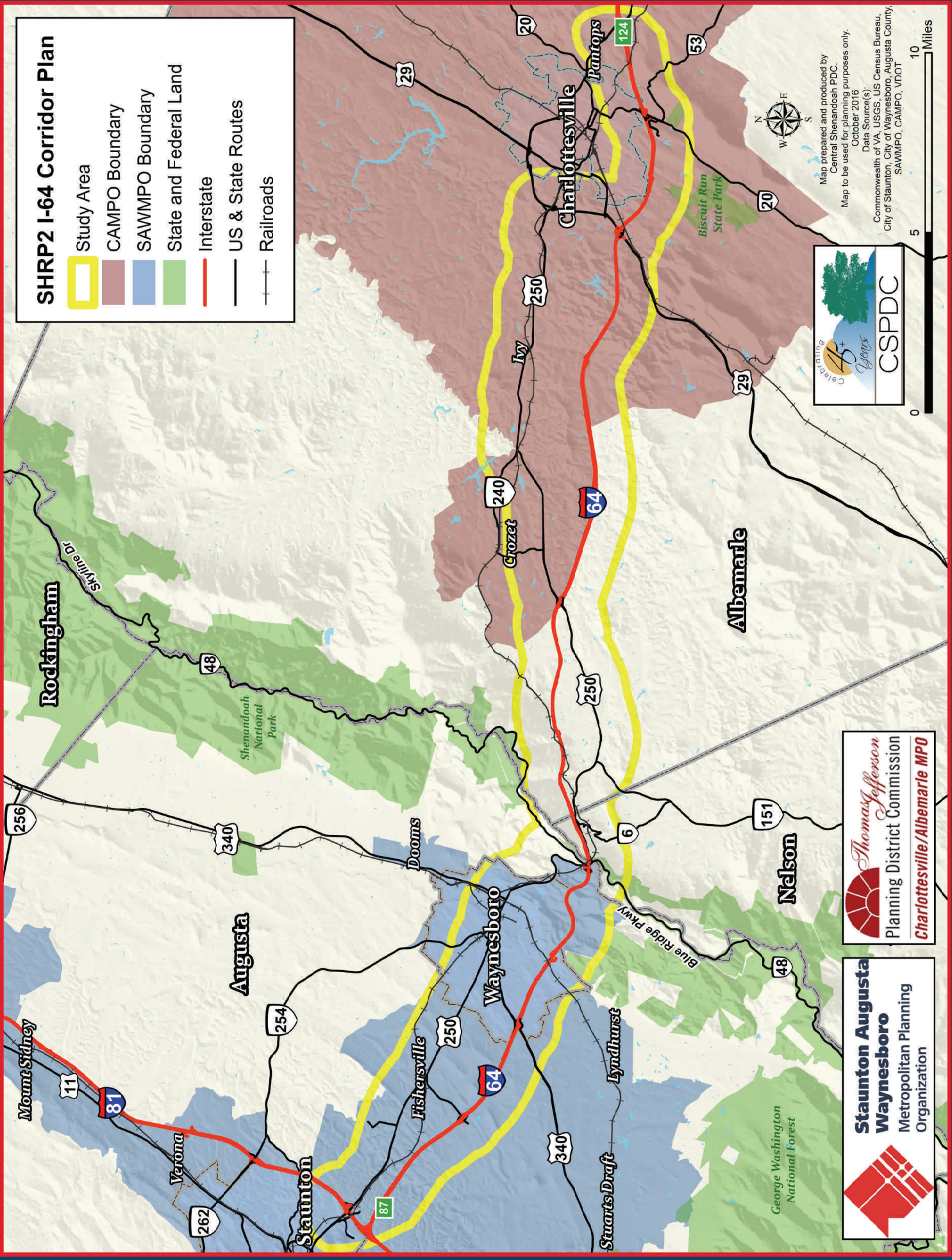
Wood Hudson—Senior Planner
Charlottesville-Albemarle MPO
401 E. Water Street
Charlottesville VA 22902
(434) 979-7310
whudson@tjpd.com

OR

Scott Philips— Transportation Planner
Staunton-Augusta-Waynesboro MPO
112 MacTanly Place
Staunton VA 24401
(540) 885-5174
scott@cspdc.org

SHRP2 I-64 Corridor Plan

-  Study Area
-  CAMPO Boundary
-  SAWMPO Boundary
-  State and Federal Land
-  Interstate
-  US & State Routes
-  Railroads






CSPDC

Map prepared and produced by
 Central Shenandoah PDC
 Map to be used for planning purposes only.
 October 2016
 Data Source(s):
 Commonwealth of VA, USGS, US Census Bureau,
 City of Staunton, City of Waynesboro, Augusta County,
 SAWMPO, CAMPO, VDOT





Thomas Jefferson
 Planning District Commission
 Charlottesville/Albemarle MPO



Staunton Augusta
Waynesboro
 Metropolitan Planning
 Organization