

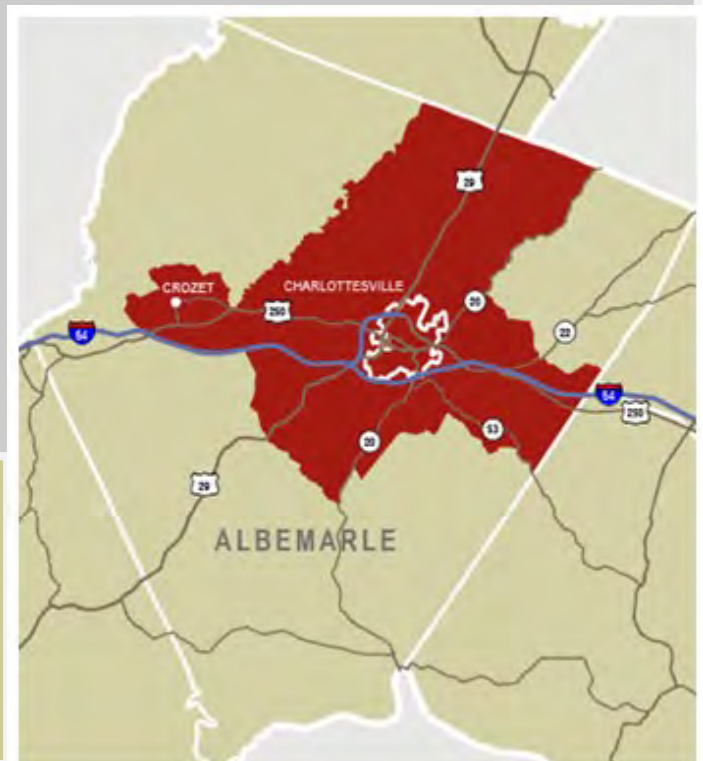


# Long Range Transportation Plan

**What is a Long Range Transportation Plan?:** A Long Range Transportation Plan (LRTP) is a federally-mandated plan that outlines the region's priority transportation improvements over the next 20 years at a minimum. The Charlottesville-Albemarle MPO's current Long Range Transportation Plans covers the time period through 2045. Regional transportation projects must be included in a Metropolitan Planning Organization (MPO)'s LRTP in order for it to qualify for federal funding. It exists to provide guidance on current transportation conditions and attempts to project what projects and monies will be needed in the future.


The LRTP covers all modes of transportation (private vehicles, public transit, bicycles, pedestrians, air) and transportation issues such as bridge maintenance and safety improvements. The plan incorporates a performance-based approach, considering many factors like safety, congestion, freight, access, state of good repair, and transit, as well as a robust public input process specifically to identify transportation deficiencies and potential projects. Performance measures are then used to determine the degree to which various improvements would accomplish the region's vision, goals, and objectives. A set of performance measures, created using federal resources, public comment, and committee input, was used to produce quantitative values for project scenarios. With these tools, the MPO was able to determine the degree to which various transportation improvements accomplished the region's vision, goals, and objectives, and select the most optimal project combination for achieving them.

**What are does it cover?** The LRTP covers the Charlottesville-Albemarle MPO's boundaries, which include all of the City of Charlottesville and parts of Albemarle County.



## What is the LRTP's role in policymaking?

In order for transportation projects to be eligible for federal funding, the Federal Highway Administration (FHWA) and Federal Transit Administration (FTA) require that they be listed in a long-range transportation plan. For this reason, any project that requires extensive funding needs to be included in the LRTP. Project proposals are submitted to the MPO and judged upon the criteria previously created for the LRTP that highlight's the MPO's priorities for the future. These are derived, generally, from federal guidelines, but are finalized in Virginia by the Virginia Department of Transportation and Department of Rail and Public Transit. The MPO's decide which projects to submit as applications for funding.

Charlottesville/Albemarle MPO 



**2045** Long Range Transportation Plan

## What are requirements for a project's inclusion in the LRTP?

Projects are measured by various criteria including environmental impact and design, impact on regional transit, and expected operations and maintenance costs. Deficiencies within the transportation area studied are identified, and a list is developed using projects that were carried over from the previous long range plan, other plans produced by the MPO and the Thomas Jefferson Planning District, and the CAT and Jaunt Transit Development Plans. Modeling is used to determine the extent of the deficiency throughout the timeframe of the LRTP. Projects are chosen based on how well they address a current deficiency in the area's transportation infrastructure, satisfy the MPO's criteria, and how much they cost. Public comment is also solicited, as well as recommendations from the MPO's standing committees.

## How is the Long Range Transportation Plan Adopted?

The LRTP is adopted by the Policy Board of the MPO after public hearings and presentation of the final plan.



**(434) 979-7310**



**info@tjpd.org**



**<http://campo.tjpd.org>**