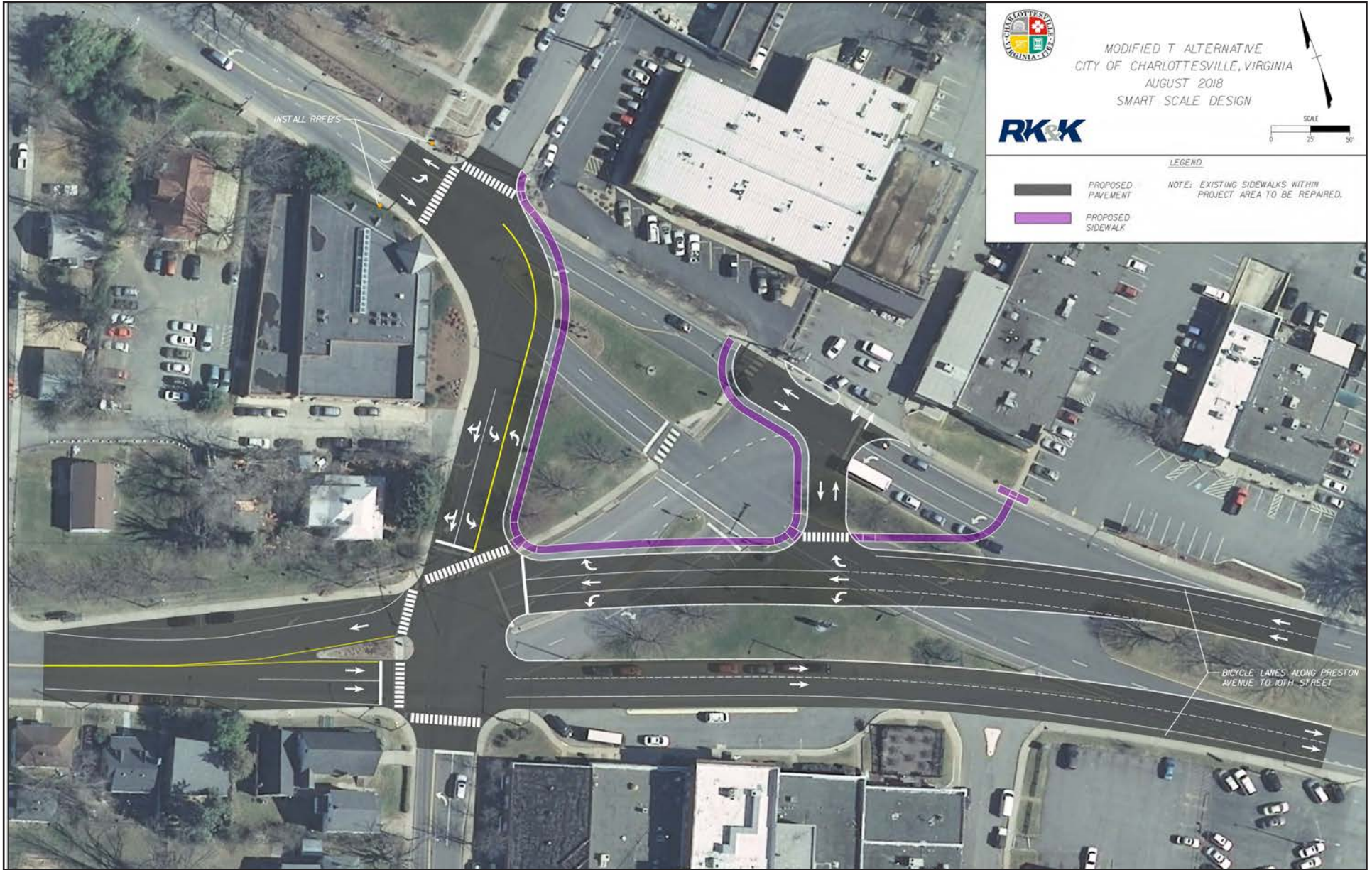


Preston Avenue & Grady Avenue Intersection Improvements



Preston Avenue & Grady Avenue Intersection Improvements

Project Description

The project will provide multi-modal transportation improvements to increase safety and enhance operations for all users at the intersection of Preston Avenue, Grady Avenue, and 10th Street. The focus of the project will be creating “complete streets” consistent with the City’s Streets that Work Plan and creating safer travel for vehicles, pedestrians and cyclists. In order to accomplish this goal, the project will consist of intersection improvements that focus on improving roadway operations, vehicular movements, bicycle and pedestrian safety and multimodal connectivity. Improvements will include new curb and pedestrian ramps, enlarged median islands, new concrete sidewalk along Grady Ave and Preston Ave, revised pedestrian crossings at intersections, installation of bicycle facilities, full signal equipment upgrades including pedestrian signals, and modifications to vehicular lanes to minimize conflicts and increase overall efficiency of operations.

Cost Estimate

Preliminary Engineering	\$1.3 million
Right of Way Acquisition	\$1.0 million
Construction	\$3.8 million

Needs Addressed



Safety



Pedestrian Access



Bicycle Access

Project Concerns

No known concerns at this time

Entity Submitting

City of Charlottesville