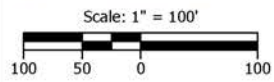
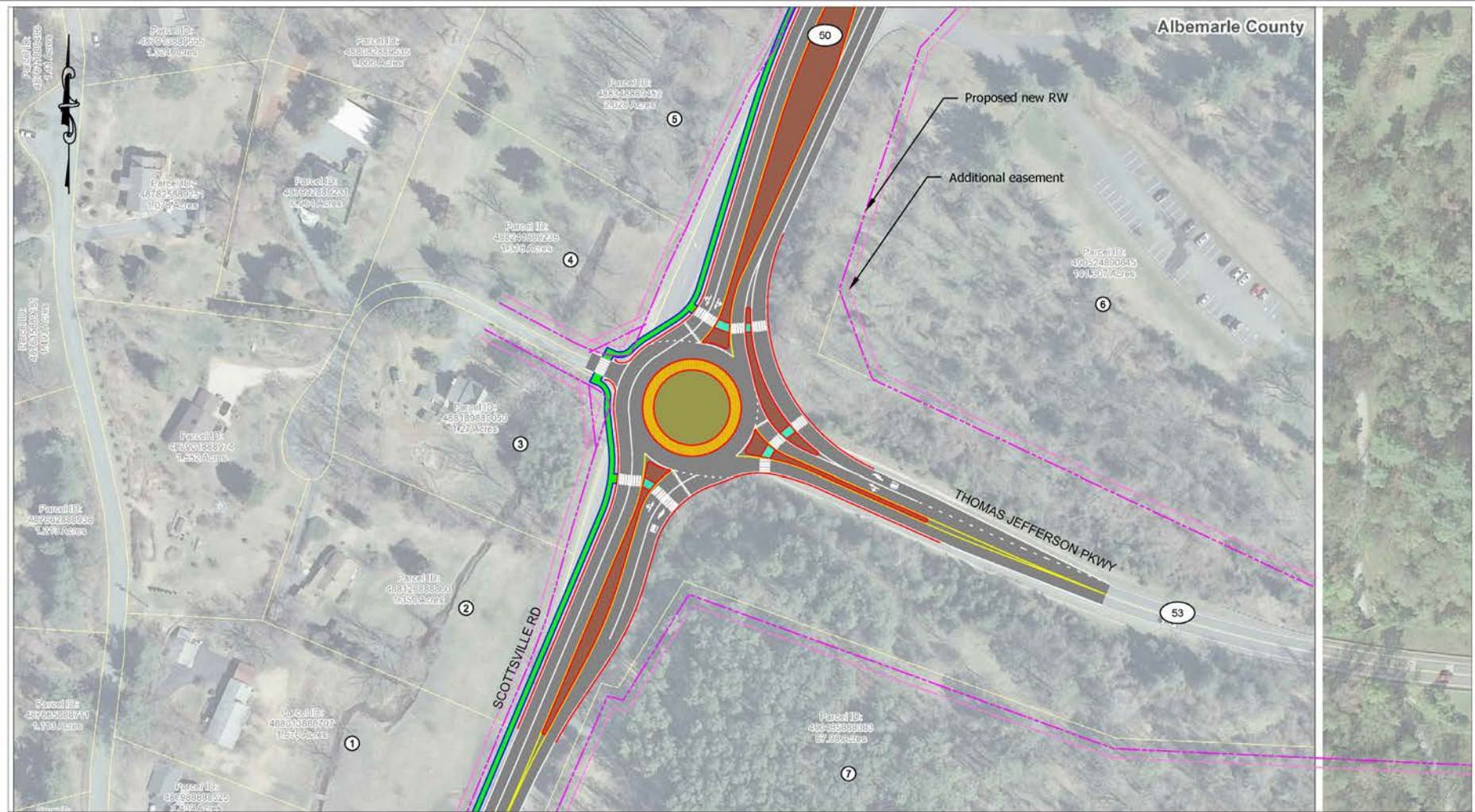


# US 53 and Route 20 Intersection Improvements

VDOT TMPD Intersection Analysis

July 2018



Roundabout Conceptual Design - DRAFT  
Route 20 (Scottsville Road) / Route 53 (Thomas Jefferson Parkway)  
Albemarle County, VA

Figure  
2.001

**K** KITTelson  
& ASSOCIATES

# US 53 and Route 20 Intersection Improvements

---

## Project Description

---

This project will convert the existing signalized intersection to a roundabout and include a shared use path along Route 20. This will reduce conflict points and crashes and provide increased access for pedestrians and bicyclists.

## Cost Estimate

---

Preliminary Engineering .....	\$1.0 million
Right of Way Acquisition .....	\$1.5 million
Construction .....	\$5.0 million

## Needs Addressed

---



**Safety**



**Pedestrian Access**



**Bicycle Access**

## Project Concerns

---

No known concerns at this time

## Entity Submitting

---

Albemarle County